

وايز  
wise

مؤسسة قطر  
Qatar Foundation



لإطلاق قدرات الإنسان Unlocking human potential



2024-25 **PRESS KIT**

# CONTENTS

**03**

**About WISE**

**04**

**The WISE Summit**

**06-08**

**Programs**

WISE Prize for Education: p.7  
WISE Edtech Accelerator: p.8

**09-10**

**Research & policy**

Research 2025: p.10

**11-12**

**WISE Community**

WISE@ international events: p.12

**13**

**About Qatar Foundation**

**14**

**Contact WISE**



# ABOUT WISE

**WISE is a global movement focused on ideation and innovation in the field of education.**

Its international community supports the in-depth exploration and development of new ideas to address the ever-evolving education challenges worldwide. It is a catalyst for transformation - driving positive change within the sector and advancing equitable access to quality education for all.

Established in 2009, by Her Highness Sheikha Moza bint Nasser, WISE is an international Qatar Foundation initiative. It runs the biennial WISE Summit alongside a series of ongoing **programs, research, and community** efforts. It is designed to help build the future of education by promoting innovation, cultivating leadership, fostering collaboration, and bringing together skills and knowledge to tackle the challenges of tomorrow.

## 15 years of impact

**18** international events and **WISE summits** have brought together

**15K+** participants from **150+** countries

**5,400** organizations and **950+** speakers

WISE programs have supported more than **150 organizations and startups** who between them serve over **250 million beneficiaries** around the world

**49** research studies developed and published with national and international partners

**25k** media articles written & journalist access to a global network of education thought leaders

**158k+** social media community and growing



# THE WISE SUMMIT

The Summit is a place where education experts, innovators and peers from around the globe connect, share effective practices and discover new ideas. Since the inaugural World Innovation Summit for Education (WISE) in 2009, it has welcomed 15,000 delegates from more than 150 countries.


Hosted in Doha, Qatar, which is home to Education City and some of the world's leading educational institutes, start-up incubators and technology parks, the WISE Summit attracts attendees from a diverse range of specialisms and sectors.

Previous speakers include Michelle Obama - Former First Lady of the United States, Luis Benveniste - Global Director of Education at The World Bank, Nina Schick - GenAI expert and Founder of Tamang Ventures, and Conrad Wolfram - computational technology thought leader and European Co-founder & CEO of The Wolfram Group.

The last WISE Summit in 2023 ran with a theme of 'Creative Fluency: Human Flourishing in the Age of AI', with an in-depth look into the implications of AI on the global education landscape. It featured 197 speakers and was attended by more than 3,700 people - from leaders of institutions and academics to tech founders, policymakers and many others from the education community. More than 1000 local and international journalists have attended the WISE summit since it began.

The WISE Summit will return for its 12th edition at the end of 2025.

It will provide an opportunity to network and collaborate on an international scale, to explore new insight, attend keynote talks, and take part in interactive sessions and thought-provoking debate.



“The WISE Summit has left an indelible mark on my professional and personal journey. The diverse perspectives shared, and the collaborative spirit have inspired renewed enthusiasm and an expanded worldview.”

**WISE11 Summit attendee, 2023**

“What a wonderful event gathering the community that wants to educate our students to thrive in the rapidly changing world.”

**WISE11 Summit attendee, 2023**



# PROGRAMS

Beyond the Summit, WISE runs a series of long-term programs, which are advancing innovation in education on a global scale. These include the **WISE Prize for Education** and the **WISE Edtech Accelerator**.

WISE programs are designed to promote innovation in quality and access to education, as despite innovation in education, the hardest-to-reach young people still face barriers. One of WISE's core pillars focuses on the development of equal access to quality learning for the entire student population. It considers how a broader, fairer and smarter education system can be created – making better use of technology, people, data and evidence.

WISE supports the ongoing development of edtech, so new innovations reach schools, universities, and young people around the world - advancing the way we teach and learn. As part of this, a [WISE Edtech Testbed](#) has been created, designed as a “bridge” between classrooms and edtech ventures to develop an ecosystem of innovation.

# WISE PRIZE FOR EDUCATION

During the last 15 years, WISE has highlighted global innovation and individuals in education through its WISE Awards and WISE Prize for Education. Now, for 2025, it has launched the next generation of accolade - with one sole initiative - the WISE Prize.

The WISE Prize will support outstanding education projects impacting communities worldwide. It is facilitating the development of breakthrough programs or products with potential to transform global education systems.

To compete for the WISE Prize 2025, global innovators and organizations with a demonstrable track-record are tasked with proposing solutions to one of three education challenges - improving the teaching of Arabic language, accelerating foundational literacies, or addressing challenges in AI.

# WISE PRIZE FINALISTS

The selected finalists will receive financial support and mentorship from WISE, to develop their proposed ideas into tangible solutions. This 12-month program will culminate at WISE12 in 2025, where the pioneering solutions will be showcased.

The WISE Prize winner will be announced at the WISE Summit's opening session and **the WISE Prize 2025 winner will receive \$1Million (USD)** to further advance their idea.

More information on  
the WISE Prize [here](#)



WISE initiatives, including the WISE Prize for Education and legacy WISE Awards have celebrated more than **90 winning projects** and received applications from **150 countries**.

# WISE EDTECH ACCELERATOR

The **WISE Edtech Accelerator** is cultivating the next generation of promising edtech startups

Launched in 2014, this program has been designed to support the growth of young, pioneering startups and achieve positive impact in the field of education. Each year, the WISE team selects a cohort of startups to take part in a 12-month program, to support their development and help them scale.



To date, the WISE Edtech Accelerator has praised more than:

**40 EdTech ventures** from **22 countries** - helping more than **15M beneficiaries** in **130+ countries.**

The recent cohort included startups headquartered in Egypt, Kenya, Bahrain and Nigeria.

Through bespoke mentorship and coaching, international bootcamps and contact with global networks, WISE Edtech Accelerator participants have accessed leading experts in education, as well as potential investors.

Discover more about WISE Edtech Accelerator participants [here](#)





# RESEARCH & POLICY

WISE investigates key trends shaping the future of education through its Research & Policy Unit. This work includes pioneering studies, global thought leaders, guidance for policymakers, and distilling findings into insights and policy briefs to catalyze discussions worldwide.

Produced in collaboration with national and international partners and recognized experts from around the world, WISE research studies address pressing global education issues. The WISE Research & Policy Unit partners with Higher Education Institutions and their affiliated research centers, International non-profit organizations (INGOs), and Governmental institutions.

A series of collaborative research reports were released ahead of the WISE11 Summit and ranged from education leadership and Edtech to well-being & learning sciences, with partners including the University of Cambridge and the University of Illinois Chicago.

Discover more about WISE's Research & Policy work [here](#)

# NEW RESEARCH: 2025

The next series of research is underway and will coincide with WISE12 in 2025. This is being developed through three core themes, all centered around the deployment and impact of AI in education:



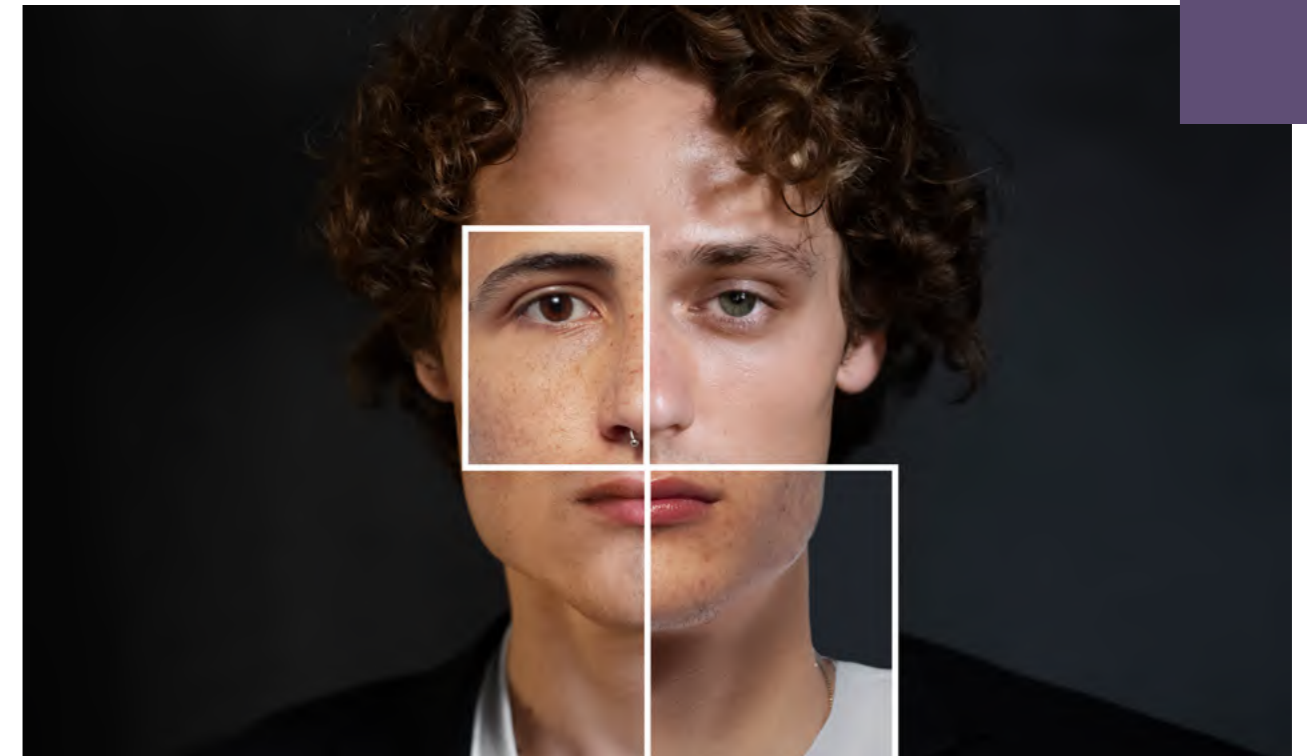
## AI and Classrooms of the Future (K-12)

Looking into the challenges and solutions associated with AI integration in classrooms, the significant potentials and constraints of personalized learning, and apprehensions regarding security and privacy arising from the utilization of AI in schools and classrooms.

## AI, Higher Education and Workforce

Focusing on the intersection of education, workforce development, and AI technology by exploring the role of higher education providers in supporting governments and industries in creating jobs, amidst AI disruption.

As part of this theme, WISE is collaborating with the Institute of International Education (IIE) and has formed a research consortium with seven universities from Qatar, Africa, Asia, Europe, USA, and South America.



## Digital Sovereignty and Ethics in the Age of AI

Examining the challenges faced by education systems in identifying, combating, and debunking disinformation and misinformation. Providing ways for educational systems to be strengthened against the challenges posed by AI-generated propaganda and deep fakes.

Cross-cutting themes within these focus areas, include access to **education, equity, wellbeing, sustainability, and leadership.**

# COMMUNITY

A collaborative community runs throughout WISE events, programs and research – from leaders to learners.

The WISE Summit and international events have developed an active community of 35k+ members and innovators in our directory, with regular insight from top education leaders.

# WISE @ INTERNATIONAL EVENTS

As well as the biennial Summit, there are a series of WISE@ global forum events hosted in cities around the world – including Tunis, Beijing, Madrid, Accra, New York City, and most recently in Paris.

WISE@ events connect our global community in between the biennial Summits. They are designed to support accessibility to WISE – going straight into the hearts of different international cities to exchange knowledge and experiences with locals and regional partners.





## ABOUT QATAR FOUNDATION

Qatar Foundation for Education, Science and Community Development (QF) is a non-profit organization that supports Qatar on its journey to becoming a diversified and sustainable economy. QF strives to serve the people of Qatar and beyond by providing specialized programs across its innovation-focused ecosystem of education, research and development, and community development.

QF was founded in 1995 by His Highness Sheikh Hamad bin Khalifa Al Thani, the Father Amir, and Her Highness Sheikha Moza bint Nasser, who shared the vision to provide Qatar with quality education.

Today, QF's world-class education system offers lifelong learning opportunities to community members as young as six months through to doctoral level, enabling graduates to thrive in a global environment and contribute to the nation's development.

QF is also creating a multidisciplinary innovation hub in Qatar, where homegrown researchers are working to address local and global challenges. By promoting a culture of lifelong learning and fostering social engagement through programs that embody Qatari culture, QF is committed to empowering the local community and contributing to a better world for all.

For a complete list of QF's initiatives and projects, please visit: [www.qf.org.qa](http://www.qf.org.qa)

For any media inquiries, please contact: [pressoffice@qf.org.qa](mailto:pressoffice@qf.org.qa)

## CONTACT WISE

Our media team can connect you with education leaders and innovators from around the world. If you would like to interview a WISE representative or a member of the WISE Community, please get in touch.

For journalist requests or to arrange attendance at the WISE 12 Summit in 2025, please contact the WISE team at [media@wise.org.qa](mailto:media@wise.org.qa)

To access latest news and download media assets, please visit the [WISE newsroom](https://www.wise-qatar.org/about/#about-press) on the website <https://www.wise-qatar.org/about/#about-press>



[wise-qatar.org](http://wise-qatar.org)



[facebook.com/wiseqatar](https://facebook.com/wiseqatar) or [@wiseqatar](https://www.facebook.com/wiseqatar) or World Innovation Summit for Education



[@WISE\\_tweets](https://twitter.com/WISE_tweets)



[World Innovation Summit for Education - WISE](https://www.linkedin.com/company/world-innovation-summit-for-education-wise)



[WISE Channel for Education - WISE](https://www.youtube.com/channel/UC...)



[@wiseqatar](https://www.instagram.com/wiseqatar)

وايزز  
WISE

Photos credits:

Photographs courtesy of Qatar Foundation with the following exceptions:

P.1 ©Opportunity Edufinance / P.4 ©2023 WISE Summit / P.7 © Safeena Husain, WISE Prize for Education winner, 2023 / P.8 ©PraxiLabs / © Instill Education / P.10 © Tekwill Digital Labs / ©Freepic.com /P.12 © GEF & WISE @ Medellin / © 2023 WISE Summit